

For Sub Lease

10,285 Sf Industrial Condo

2702 Southport Way, Suites E & F
National City, CA 91950

Property Description:

- ◆ 10,285 sf Industrial Condo
- ◆ Suite E - 4,840 sf
- ◆ Suite F - 5,445 sf

Property Features:

- ◆ ≈ 1,100 sf of Office
- ◆ ≈ 9,185 sf of Warehouse
- ◆ Two Grade Level Doors
- ◆ Two Dock High Doors
- ◆ Two Restrooms
- ◆ 27 Parking Spaces

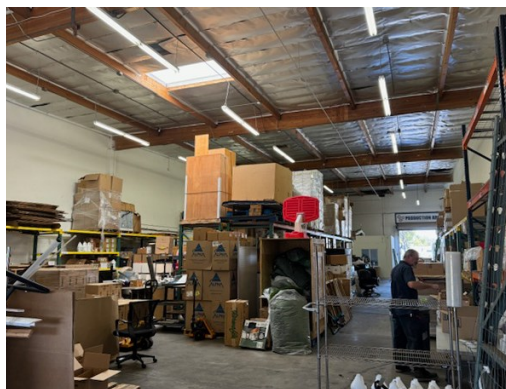
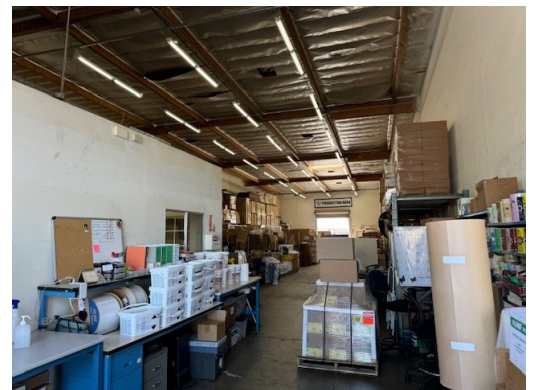
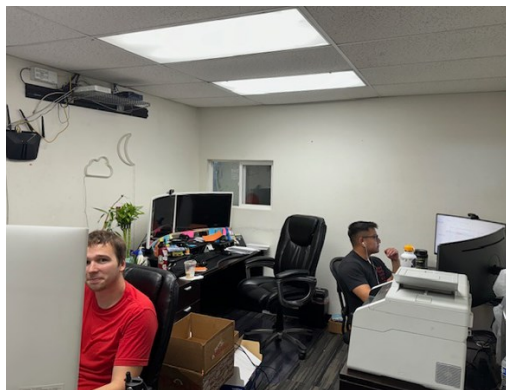
Location:

- ◆ Adjacent to the 5 Freeway
- ◆ Near the Mile of Cars Way and Bay Marina Dr. Exit
- ◆ Just Off Hoover Ave.

Zoning:

- ◆ HubZone
- ◆ Light Industrial (IL) Zoning Allows: Assembly and light manufacturing/processing, Breweries & Tasting Rooms, Building supplies and equipment, sales & rental, Offices, Research and development, Wholesaling, warehousing, and distribution and More.

**For Sub Lease:
\$19,271 Month Net**



WIESE & ASSOCIATES

REAL ESTATE BROKERAGE AND MANAGEMENT

Phone: 619.593.3600
E-mail: erik@ewiese.com
Website: www.ewiese.com
Address: 1941 Friendship Dr. Suite C, El Cajon, CA 92020

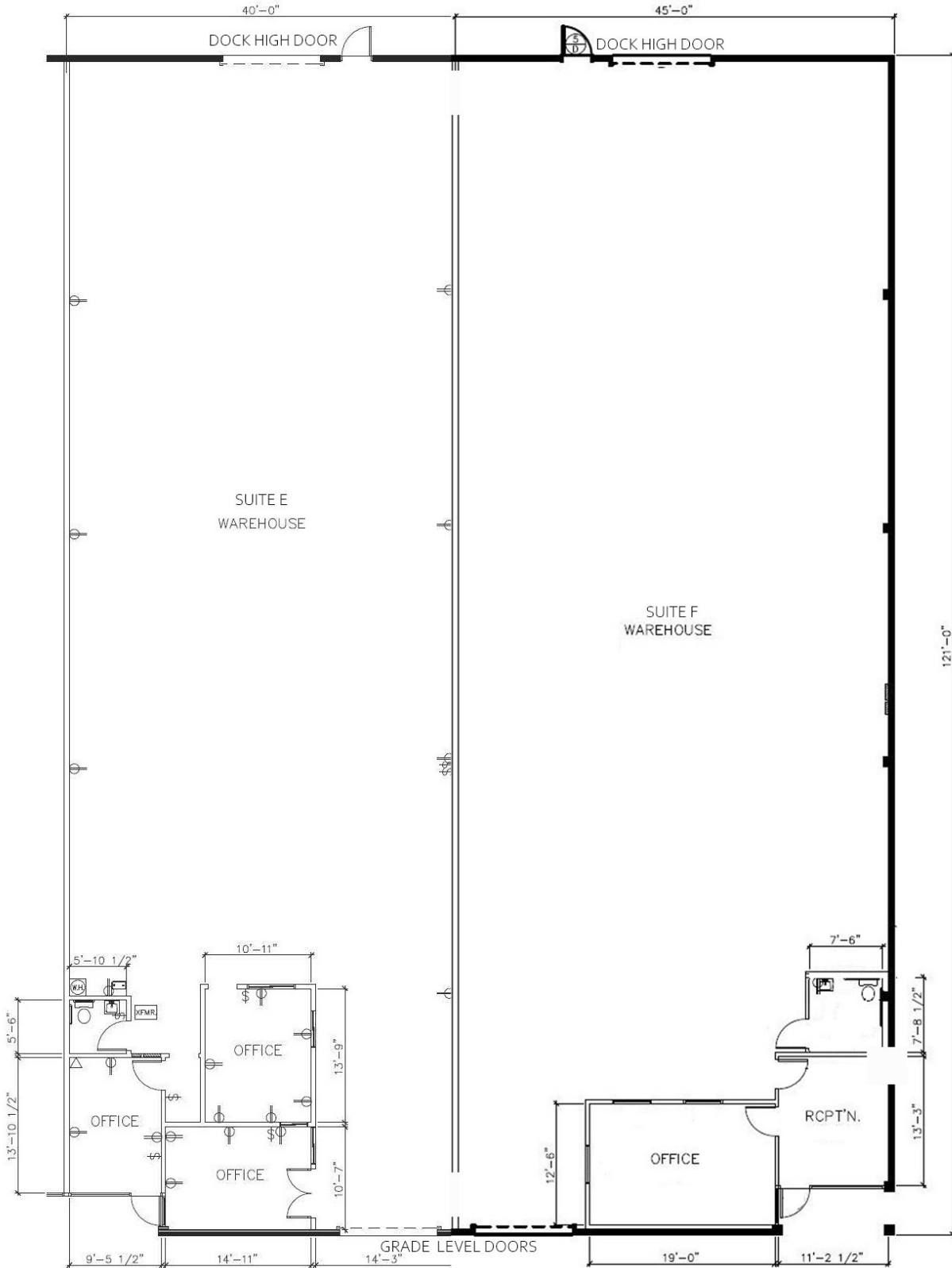


Erik Wiese
President
BRE Lic: 01190821



For Sub Lease *10,285 Sf Industrial Condo*

2702 Southport Way, suites E & F
National City, CA 91950



FLOOR PLAN

2702 SOUTHPORT WAY, SUITE E & SUITE F
NATIONAL CITY, CA